

RAIL MAINTENANCE:

STAINLESS STEEL:

Inter-Fab Commercial Aquatics manufactures pool ladders and rails in 304 or 316L Stainless Steel. These grades of stainless are fairly impervious to swimming pool water that is in balance. However, unbalanced water chemistry and stray electrical current can cause stains and/or rust. Other possible causes are improper electrical grounding, indoor environment, administering chemicals near the rail or ladder, storing your rails and ladders near chemicals, etc.

With proper care and routine maintenance you can extend the life of your stainless steel pool rails and ladders:

1. Regularly inspect your stainless steel products; check for corrosion around mounting hardware and escutcheons. Replace hardware when needed.
2. Rinse off rails and ladders frequently with fresh water to remove chemicals from your pool water and wipe dry with a clean cloth.
3. To clean your stainless steel; first remove the rail or ladder from the pool. Using warm water and gentle soap or detergent and a soft cloth, rub the rail along the polish lines of the steel. Rinse thoroughly.
4. For stubborn stains you may try Brasso® metal polish.
5. You may apply marine grade wax or paste car wax to help protect your rail or ladder from the elements longer.

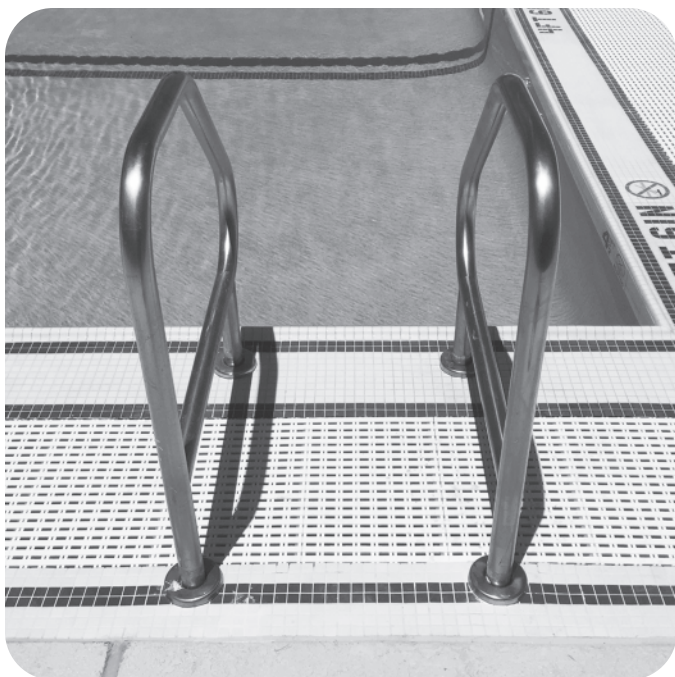
Do not use steel wool, abrasive cleaners, mineral acids, bleaches or chlorine cleansers on your stainless steel.

POWDER COATED STAINLESS STEEL:

1. Regularly inspect your pool products; check for corrosion around mounting hardware and escutcheons. Replace hardware when needed.
2. To clean your powder coated products; first remove the rail or ladder from the pool. Using warm water and gentle soap or detergents, wash the finish with a soft cloth. Rinse thoroughly with cold water.
3. For stubborn stains repeat step 2 and use a soft sponge to gently scrub away dirt. Do not use abrasive cleaners, scouring pads or other items that can cause damage to the powder coat.
4. For nicks and scratches you can purchase a touch up kit to apply to cleaned exposed stainless steel.

THERMO PLASTIC COATED STAINLESS STEEL:

1. Regularly inspect your pool products; check for corrosion around mounting hardware and escutcheons. Replace hardware when needed.
2. To clean your thermo plastic coated products; first remove the rail or ladder from the pool. Using warm water and gentle soap or detergents, wash the finish with a soft cloth. Rinse thoroughly with cold water.
3. For stubborn stains repeat step 2 and use a soft sponge to gently scrub away dirt. Do not use abrasive cleaners, scouring pads or other items that can cause damage to the powder coat.



WE OFFER A ZINC ANODE TO HELP PROTECT YOUR RAILS IN MORE CORROSIVE POOL ENVIRONMENTS.

The anode can be attached on a ladder near the ladder bumper or on a standard rail near the escutcheon.

(Part #ANODE)

